

# YOUR **ALLY** FOR CONSTRUCTION SERVICES

## INDUSTRY SECTORS

LIFE SCIENCES

BIOLOGY & CHEMISTRY  
LABS

FACILITIES &  
IMPROVEMENTS

ENERGY &  
INFRASTRUCTURE

CORPORATE INTERIORS

INDUSTRIAL &  
WAREHOUSE

REFRIGERATION & COLD  
STORAGE

SUSTAINABILITY  
UPGRADES

## OTHER INFO

### CONTRACT TYPES |

COST PLUS, GMP, LUMP  
SUM, DESIGN/BUILD

TEAM SIZE | 60+

ACTIVE PROJECTS | 190+

NAICS | 236220

DUNS | 080815619

## CONTACT US

CALL | 215-356-7550

EMAIL | INFO@ALLY  
CONSTRUCTIONSERVICES.  
COM



## DIFFERENTIATORS

- 90%+ of 2023 Revenue Generated From Repeat Customer Base
- Certified Diversity Vendor
- cGMP Trained
- ISN, Avetta, HighWire & DISA Certified
- Support & Employ Veterans
- Onsite Staffing Model Program
- Sustainability Team



## CREDENTIALS



CBRE PEP  
Strategic Sourcing Approved Supplier



## COMPANY BACKGROUND

Winner of 2023 NVBDC Presidents Award, MERCK's 2022 Diverse Partner of the Year - Veteran Category, and the NVBDC's 2022 Veteran Business of the Year, ALLY believes Veterans are one of the most diverse and talented groups in the workforce today. Our team of natural born problem-solvers thrive on providing turn-key solutions to challenges throughout the construction project lifecycle. From intricate design-build life science lab configurations and electrical substation upgrades to facilities and infrastructure support services, we enjoy working with our clients to accomplish their vision on time and on budget.

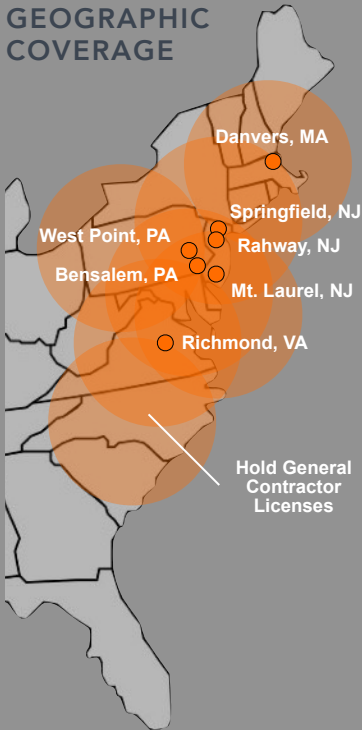
Founded and headquartered in Bensalem, PA in 2017, we are a certified Veteran-Owned Business. We provide At-Risk Construction Management and Facilities Infrastructure Support services in the Northeast, Mid-Atlantic, and Southeast markets. Our unrivaled quality is achieved through leading with integrity, cultivating a diverse-friendly, safe, fair, rewarding work environment and making a difference for our clients, employees and community.

## ALLIANCES



# COMPANY EXPERIENCE

## GEOGRAPHIC COVERAGE



CALL 215-356-7550

VISIT  
ALLYCONSTRUCTION  
SERVICES.COM



**CLIENT** LEADING PHARMACEUTICAL COMPANY  
**PROJECT** DIGITAL ENGAGEMENT TEAM FACILITY  
**LOCATION** UPPER GWYNEDD, PA **SF** 30,000

- Multi-use office space renovation with technology-driven team rooms, break-out privacy rooms, collaboration booths, open spaces, reception and lockers.
- Scope included cafeteria areas with kitchenettes that double as a large retrospective area for presentations.
- To complete project in 3 months, the team worked 10 hour days Monday through Saturday, as well as, some Sundays.



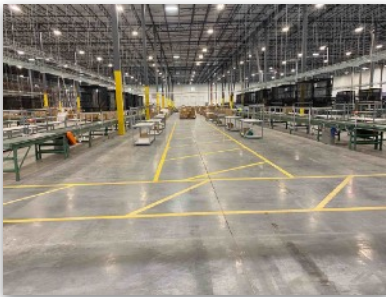
**CLIENT** LEADING PHARMACEUTICAL COMPANY  
**PROJECT** LIFE SCIENCE CAMPUS CHILLER REPLACEMENT  
**LOCATION** RAHWAY, NJ

- Replacement of four old absorber type chillers with two new steam turbine driven chillers.
- Project involved the installation of new chillers, replacement of water pumps, installation of new E-Stop capabilities, and a new connection to existing distributed control system.
- Challenges included the size of existing chillers, which were rolled out on high strength skates, craned to a train and transported to a metal salvage yard to be craned again off the trailer.



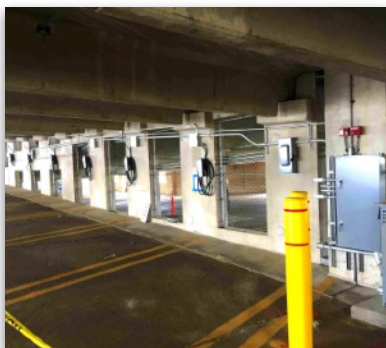
**CLIENT** LEADING PHARMACEUTICAL COMPANY  
**PROJECT** LAB/OFFICE SWING SPACE  
**LOCATION** WARREN, NJ **SF** 15,000

- Major renovation of combined lab/office space previously subleased from another life science company completed on time and on budget.
- Overcame challenges of tight overhead HVAC coordination, inheriting and expanding existing building automation system, assisting with design/build elements of the office renovation portion of the project, and coordinating utility service connections with lab equipment moved from an existing lab.
- Team provided pre-construction services in the form of estimating/budgeting and purchasing of long lead equipment, as well as construction management services.



**CLIENT** CONFIDENTIAL INDUSTRIAL/WAREHOUSE  
**PROJECT** IT & CONVEYOR UPGRADES  
**LOCATION** EDISON, NJ **SF** 300,000

- Project consisted of electrical infrastructure upgrades and installation of an IT network to support client's logistics operations.
- Scope included installations for conveyor system, fiber backbone, CAT6 cabling, WAP system, perimeter security system, and supervising client hired contractors.
- During a time of limited material availability and transport delays in August 2021, ALLY leveraged its relationships with subcontractors and material suppliers to meet the client's operational startup goals of running at full capacity for the holiday season.



**CLIENT** LEADING PHARMACEUTICAL COMPANY  
**PROJECT** ELECTRIC VEHICLE CHARGING SYSTEM INSTALLS  
**LOCATION** NEW JERSEY & PENNSYLVANIA

- Power distribution to over 100 EV charging stations in various parking facilities to include garages and open parking lots.
- Scopes included back end infrastructure implementation with varying levels of complex EV parking solutions across multiple client sites, installation of Tesla/Universal combination car charging stations, protective bollards and guardrails, parking area remark for electric vehicle use only, way-finding signage throughout to direct drivers to the chargers, and supplying specialty fire extinguishers in the event of an electric vehicle battery fire.
- All work was performed to allow passage of employees to not disrupt flow of traffic in active garages.