

# YOUR **ALLY** FOR CONSTRUCTION SERVICES

## INDUSTRY SECTORS

FACILITIES & IMPROVEMENTS

CORPORATE INTERIORS

LIFE SCIENCES & TECHNOLOGY

INDUSTRIAL & WAREHOUSE

ENERGY & PILOT PLANT UPGRADES

BUILDING ENVELOPES

BIOLOGY & CHEMISTRY LABS

REFRIGERATION & COLD STORAGE

SUSTAINABILITY UPGRADES

## OTHER INFO

### CONTRACT TYPES |

COST PLUS, GMP, LUMP SUM, DESIGN/BUILD

TEAM SIZE | 60+

ACTIVE PROJECTS | 190+

NAICS | 236220

DUNS | 080815619

## CONTACT US

CALL | 215-356-7550

EMAIL | [INFO@ALLY  
CONSTRUCTIONSERVICES.  
COM](mailto:INFO@ALLYCONSTRUCTIONSERVICES.COM)



## DIFFERENTIATORS

- 90%+ of 2023 Revenue Generated From Repeat Customer Base
- Certified Diversity Vendor
- cGMP Trained
- ISN, Avetta, HighWire, GRMS & DISA Certified
- Support & Employ Veterans
- Full-Time Onsite Staffing Model Option
- Internal Sustainability Team

## CREDENTIALS



CBRE PEP  
Strategic Sourcing Approved Supplier



## COMPANY BACKGROUND

Winner of 2023 NVBDC Presidents Award, MERCK's 2022 Diverse Partner of the Year - Veteran Category, and the NVBDC's 2022 Veteran Business of the Year, ALLY believes Veterans are one of the most diverse and talented groups in the workforce today. Our team of natural born problem-solvers thrive on providing turn-key solutions to challenges throughout the construction project lifecycle. From intricate infrastructure and electrical substation upgrades to EV charging station installs, we enjoy working with our clients to accomplish their goals of sustainability.

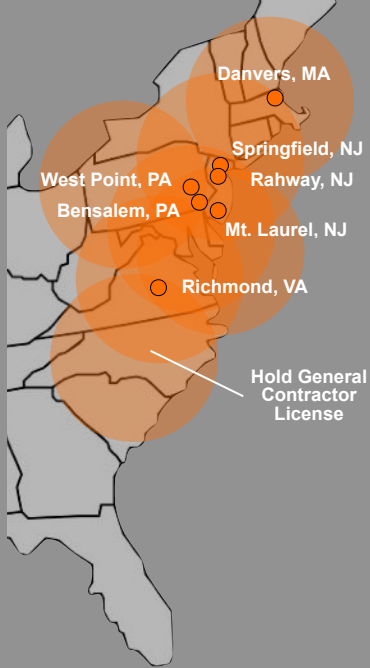
Founded and headquartered in Bensalem, PA in 2017, we are a certified Veteran-Owned Business. We provide At-Risk Construction Management and Facilities Infrastructure Support services in the Northeast, Mid-Atlantic, and Southeast markets. Our unrivaled quality is achieved through leading with integrity, cultivating a diverse-friendly, safe, fair, rewarding work environment and making a difference for our clients, employees and community.

## ALLIANCES



# ELECTRIC VEHICLE EXPERIENCE

## GEOGRAPHIC COVERAGE



CALL 215-356-7550

VISIT  
ALLYCONSTRUCTION  
SERVICES.COM



**CLIENT** LEADING PHARMACEUTICAL COMPANY

**PROJECT** PARKING EV CHARGER INSTALL

**LOCATION** WEST POINT, PA **TIME** 6 MONTHS Charges

- Existing parking garage installation of 16 EV Chargers working in conjunction with electrical contractor, electrical engineer and space planning vendor.
- Scope included design and constructability coordination with Tesla.
- All work was performed to allow passage of employees to not disrupt flow of traffic in active garages.



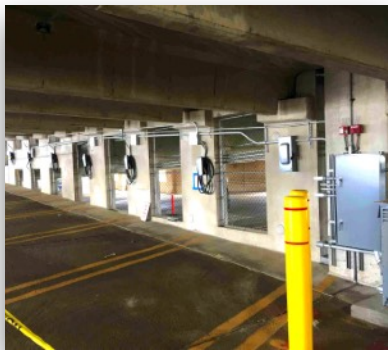
**CLIENT** LEADING PHARMACEUTICAL COMPANY

**PROJECT** 400-CAR PARKING GARAGE ELECTRICAL INFRASTRUCTURE

**LOCATION** WEST POINT, PA

**SIZE** 75,000 SF **TIME** 9 MONTHS

- Existing parking garage electrical distribution system was in poor condition due to water infiltration and age of equipment.
- Provided a 40 year life span service with the flexibility for the EV charger footprint to increase by providing additional power for future demands.
- Scope included installing a 480 volt 400 amp for service from another building to provide temporary power for the garage and life safety elevators, security and fire alarm without service interruptions.
- Project included install of a new electrical distribution system using non-ferrous or hot-dipped galvanized materials, programmable garage lighting breakers, new 225 amp dedicated to the EV Charging Panel capable of 16 new Level II chargers, and garage joint water proofing to prevent future moisture damage.



**CLIENT** LEADING PHARMACEUTICAL COMPANY

**PROJECT** 36-CAR EV CHARGER INSTALLATION

**LOCATION** RAHWAY, NJ

**SIZE** 100,000 SF **TIME** 12 WEEKS

- Installation of 36 Tesla/Universal combination car charging stations and associated infrastructure in 3 parking garages on Client campus.
- Scope included installation of protective bollards and guardrails, parking area remark for electric vehicle use only, way-finding signage throughout to direct drivers to the chargers, and supplying specialty fire extinguishers in the event of an electric vehicle battery fire.
- Chargers were installed on the 5th and 6th floor of each garage. The electrical infrastructure included a vertical installation component, that required coordination with the facility management team to close affected spaces and drive lanes while work was performed.
- Each garage was operational during the installation.



**CLIENT** LEADING PHARMACEUTICAL COMPANY

**PROJECT** PARKING LOT EV CAR CHARGER INSTALL

**LOCATION** SOMERVILLE, NJ **TIME** 2 WEEKS

- Installation of one Tesla car charging station and one twin Universal car charging station (ability to charge three cars).
- Chargers were installed in a parking lot roughly 300 feet from the building.
- Project required installation of underground conduit and an outdoor distribution panel.
- In addition to chargers, the team installed protective bollards and guardrails, and re-marked the parking areas for electric vehicle use only.